

# Violoncello

♩=66

2 25

stacc.

*f-p*

29

32

*f-p*

36

div

*ff*

38

40

42

44

pizz.

*mf*

50



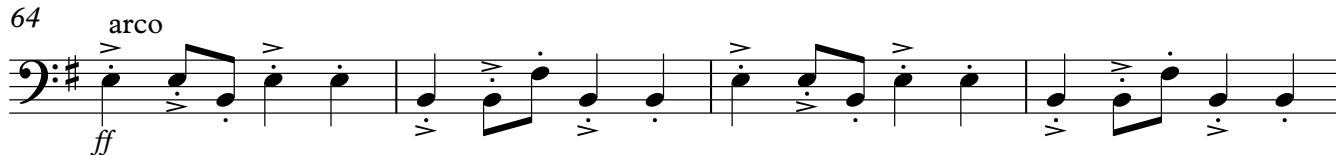
56



60

*cresc.*

64



68



73



81



106

*pp - cresc**mf-cresc*

115



123



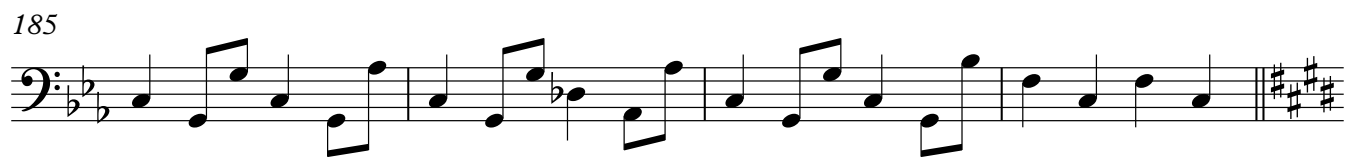
130

**Liberamente**

162  $\text{♩}=60$  **20**  $\text{♩}=50$  pizz. *mp*



185



189



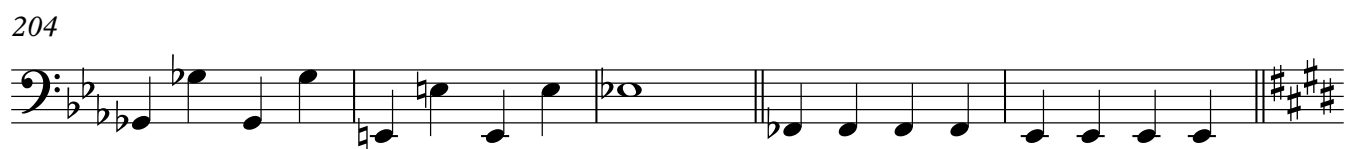
194 arco *a tempo* pizz *molto rall*



199



204



209



214 *p*



219

